

SOVET
ITALIA

Milano design week 2023
revision June 2023



NEI ME...
MA È GIÀ...
QUALCOSA

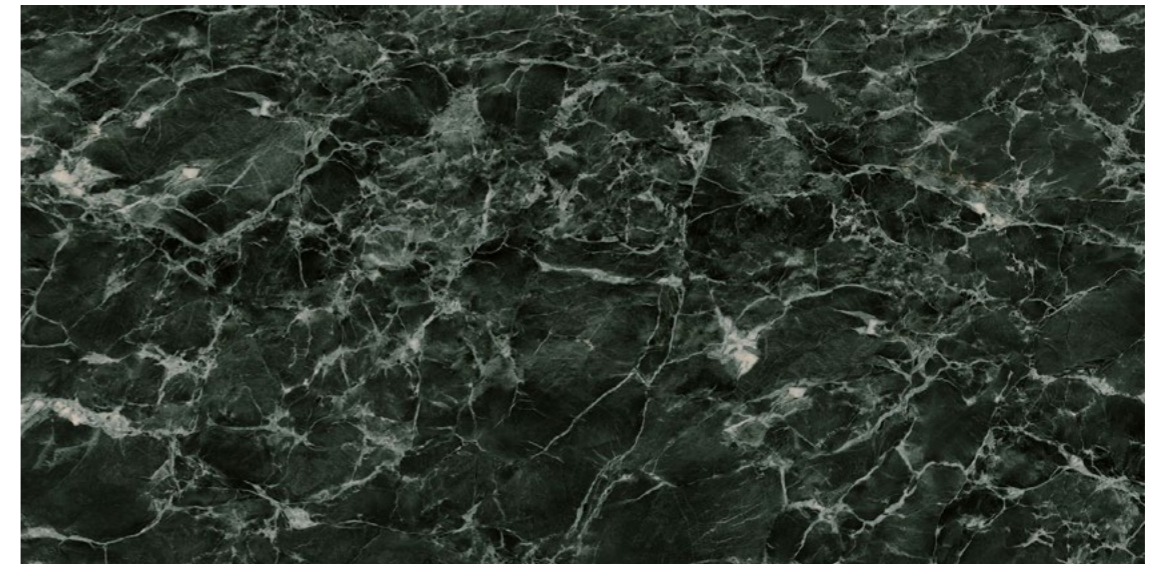


For the *Milano* design week we want to introduce new shapes and materials to give you new inspirations for your spaces.



The new green ceramic Aver is proposed to offer a new shade in Sovet complements. A finish that offers new inspirations for decorating spaces and combines well with Sovet's wide range of materials. It joins the CE2 category as a price and in all collections where ceramics are offered.

La nuova ceramica verde Aver è proposta per offrire una nuova tonalità nei complementi Sovet. Una finitura che offre nuove ispirazioni per l'arredo degli spazi e che ben si combina all'ampia gamma di materiali Sovet. Entra a far parte della categoria CE2 come prezzo ed in tutte le collezioni dove sono proposte le ceramiche.



KV

Aver green
Verde aver

New materials



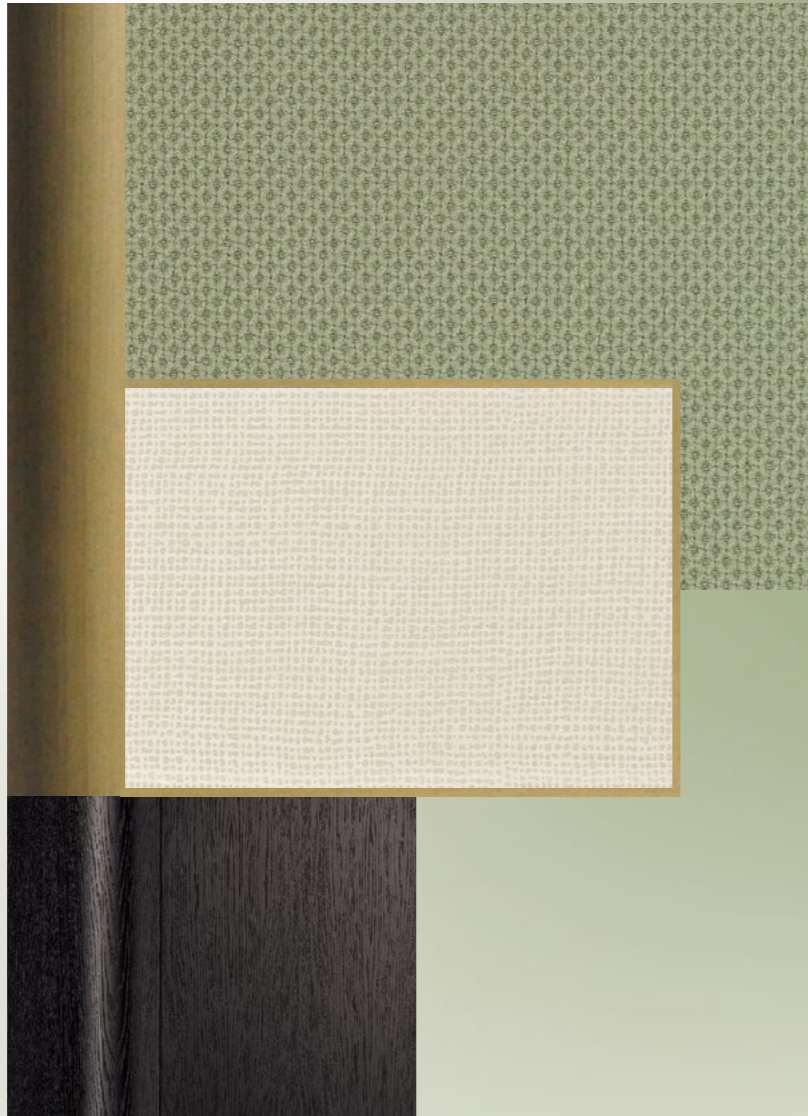
The new fabric proposed for all seats, armchairs and sofas in the Sovet collection is a multi-directional stretch fabric that covers all curved shapes with a natural appearance. The polyester it is made of is 100% recyclable. The price of the Contour fabric will have the same category as the Step fabric that is already in the catalog.

Il nuovo tessuto proposto per tutte le sedute, poltrone e divani della collezione Sovet è un tessuto elastico multidirezionale che riveste in modo naturale tutte le forme curve con un aspetto naturale. Il poliestere in cui è fatto è 100% riciclabile. Il prezzo del tessuto Contour avrà la stessa categoria dello Step che è già a catalogo.

CONTOUR



New texture

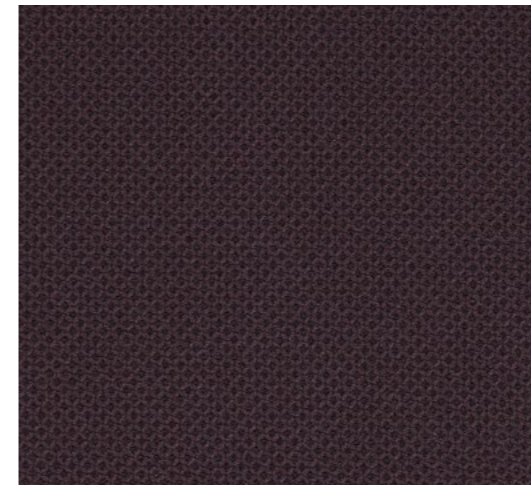




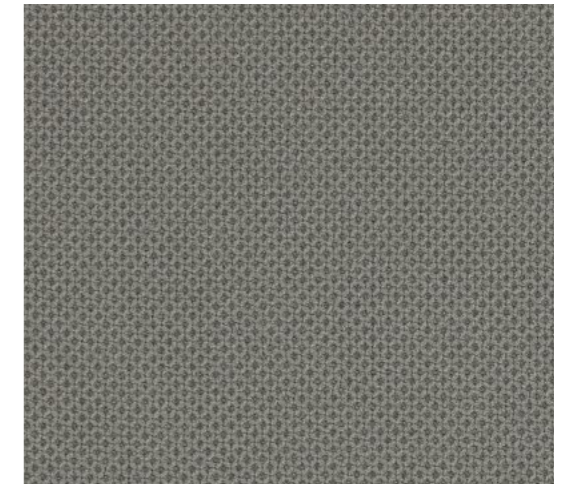
F20
Beige
Beige



F21
Sand
Sabbia



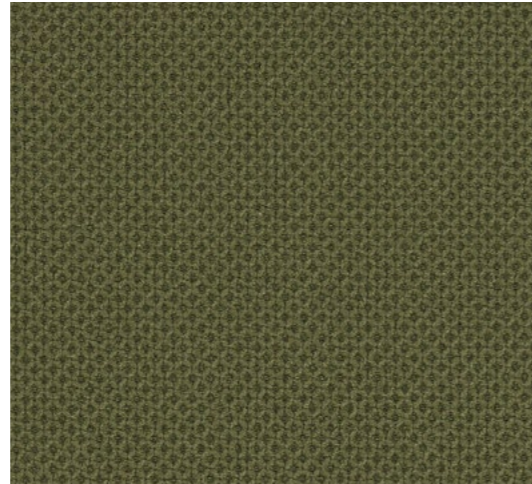
F22
Mocha
Caffé



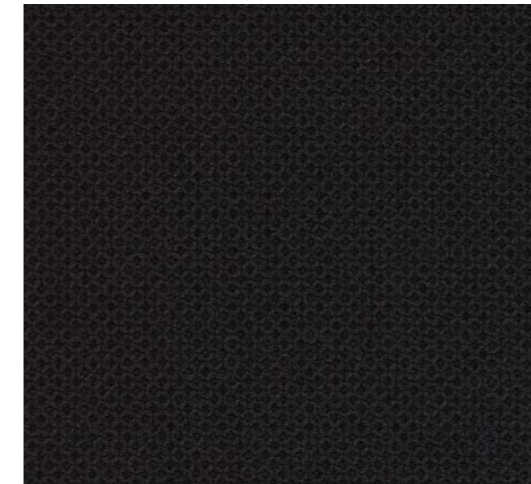
F23
Grey
Grigio



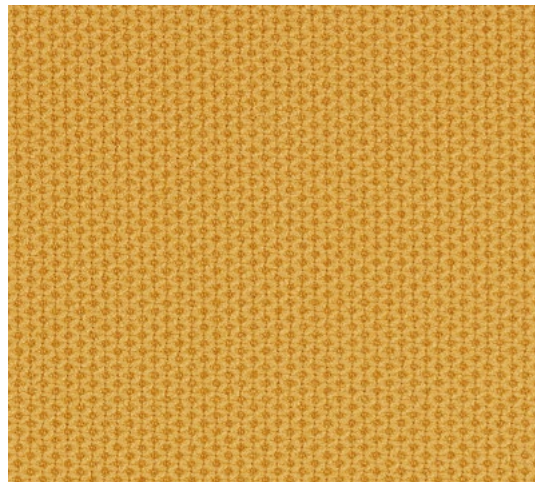
F27
Light green
Verde chiaro



F26
Military green
Verde militare



F24
Black
Nero



F25
Ocre yellow
Giallo ocre



F28
Dark red
Rosso scuro

Composition

100% Polyester.
100% Poliestere.

Abrasion resistance
85.000 Martindale

Pilling
4-5 EN ISO 12945-2

Lightfastness
5-7 EN ISO 105-B02

Use

Residential / Contract
Residenziale / Contract

Suitable for US market



40°C shrinkage max. 3%
40°C restringimento max. 3%



60°C shrinkage max. 3%
60°C restringimento max. 3%



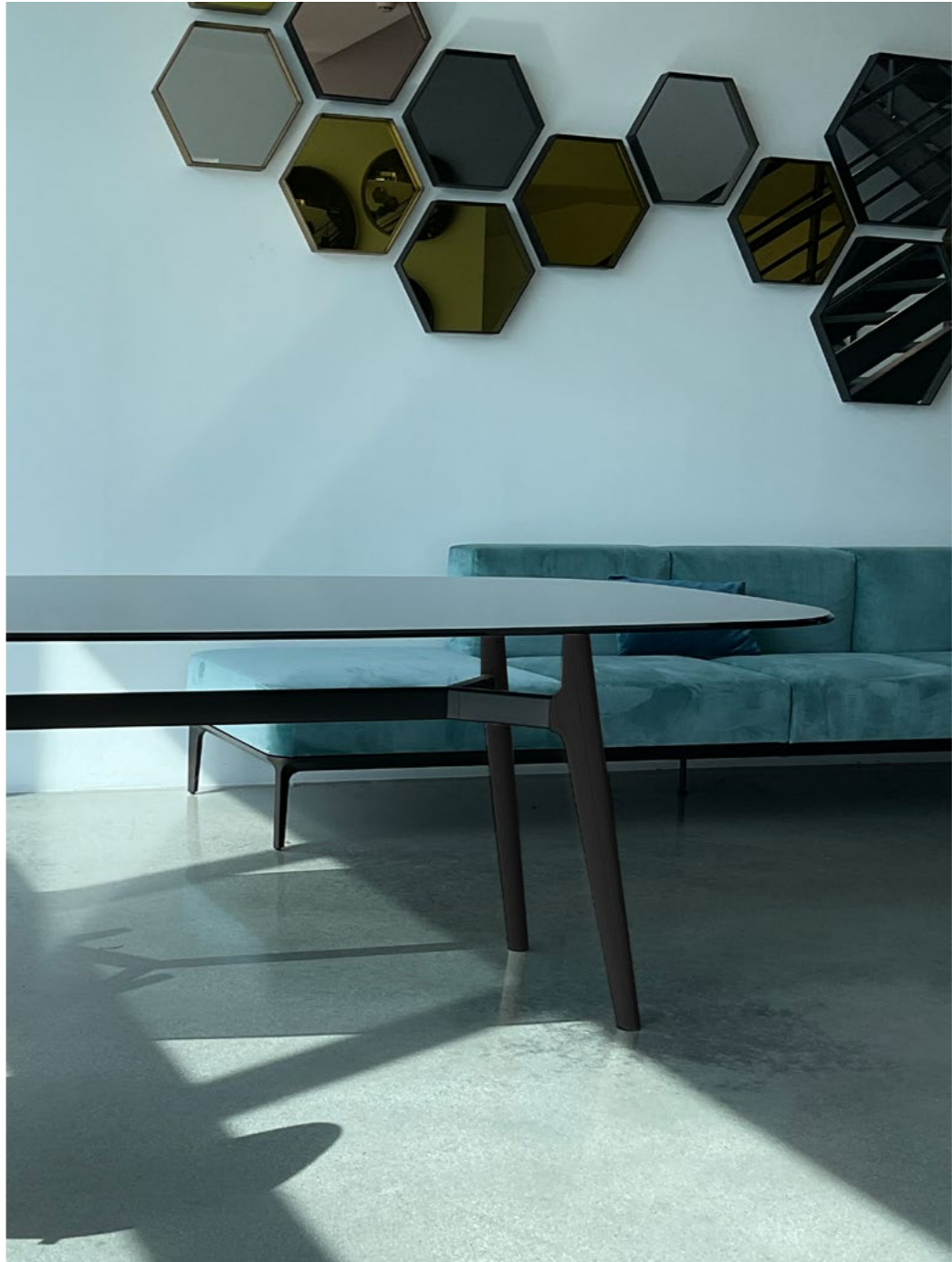
74°C shrinkage max. 3%
74°C restringimento max. 3%

Lewood



Design by Gianluigi Landoni







Lewood round

Design by Gianluigi Landoni

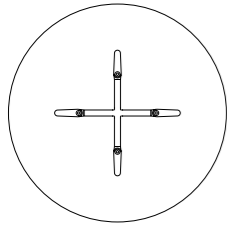


Table with aluminium crossbar and wooden legs, various finishes. Top available in various sizes, materials and finishes.

Tavolo con traversa in alluminio e gambe in legno, varie finiture. Top disponibile in varie misure, materiali e finiture.

Finiture top / Top finishes

Dimensions cm (L x P x H)	Base	Cod	VETRO GLASS		ACIDATO FROSTED		NET GLASS		LIQUID GLASS	MATERIA	CERAMICA CERAMICS		LEGNO WOOD	
			TETE/TFTF	Cat. B / D	AEAE	Cat. E	Cat. NE	Cat. N	LF LF	Cat. CE1	Cat. CE2			
prezzi in € / price in €														
● Ø 100x74h	4 legs	GN	P1960	1722	1819	1808	1893	1840	1958	1958	2289	2054	2214	-
		BR	P1960	1744	1841	1830	1915	1862	1980	1980	2311	2076	2236	-
● Ø 120x74h	4 legs	GN	P1961	1936	2097	2033	2214	2129	2311	2311	2696	2439	2675	2086
		BR	P1961	1958	2119	2055	2236	2151	2333	2333	2718	2461	2697	2108
● Ø 130x74h	4 legs	GN	P1962	2053	2299	2192	2438	2299	2513	2513	3069	2663	2941	-
		BR	P1962	2075	2321	2214	2460	2321	2535	2535	3091	2685	2963	-
● Ø 140x74h	4 legs	GN	P1963	2203	2502	2363	2663	2513	2759	2759	3401	3026	3348	-
		BR	P1963	2233	2532	2393	2693	2543	2789	2789	3431	3056	3378	-
● Ø 150x74h	4 legs	GN	P1964	2363	2673	2524	2866	2716	2994	2994	3733	3283	3658	2524
		BR	P1964	2393	2703	2554	2896	2746	3024	3024	3763	3313	3688	2554

Finiture traversa / Crossbar finishes

Alluminio laccato/Lacquered aluminium



GN



BR



TETE



TFTF



TEB1



TEC1



TEC2



TEC3



TER4



TEV2



TEN1



TEM6



TES1



AEAE



AEB1



AEC2



AEC3



AES1



NENE



NEB1



NEC1



NEC2



NEC3



NER4



NEV2



NEN1



NEM6



NES1



LFLF



MESP



MLSP



MES1



MLS1



MBSP



MLM7



CI



CT



CD



CG



CX



CC



CZ



KC



CA



CO



CI



CU



CY



CL



CQ



CF



CH



CV

CW

KV



RN



RG



WG



NC

Finiture gambe / Legs finishes

Legno / Wood



FF



DF



NF

Please refer to page 278 of the current Price List for sale conditions.

Per le condizioni di vendita fare riferimento a pagina 278 del listino attualmente in vigore.

Lewood shaped

Design by Gianluigi Landoni

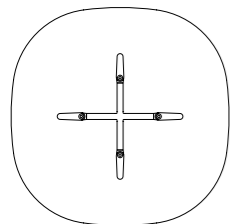


Table with aluminium crossbar and wooden legs, various finishes. Top available in various sizes, materials and finishes.

Tavolo con traversa in alluminio e gambe in legno, varie finiture. Top disponibile in varie misure, materiali e finiture.

Finiture top / Top finishes

Dimensions cm (L x P x H)	Base	Cod	VETRO GLASS		ACIDATO FROSTED		NET GLASS		LIQUID GLASS	MATERIA	CERAMICA CERAMICS		LEGNO WOOD	
			TETE/TFTF	Cat. B / D	AEAE	Cat. E	Cat. NE	Cat. N	LFLF	Cat. CE1	Cat. CE2			
prezzi in € / price in €														
100x100x74h	4 legs	GN	P1965	1807	1903	1892	1978	1924	2042	2042	2374	2138	2299	-
		BR	P1965	1829	1925	1914	2000	1946	2064	2064	2396	2160	2321	-
120x120x74h	4 legs	GN	P1966	2032	2192	2128	2310	2224	2406	2406	2791	2534	2770	-
		BR	P1966	2054	2214	2150	2332	2246	2428	2428	2813	2556	2792	-
130x130x74h	4 legs	GN	P1967	2160	2406	2299	2545	2406	2620	2620	3176	2770	3048	-
		BR	P1967	2182	2428	2321	2567	2428	2642	2642	3198	2792	3070	-
140x140x74h	4 legs	GN	P1968	2331	2631	2492	2791	2641	2887	2887	3529	3155	3476	-
		BR	P1968	2361	2661	2522	2821	2671	2917	2917	3559	3185	3506	-
150x150x74h	4 legs	GN	P1969	2524	2834	2684	3026	2877	3155	3155	3893	3444	3818	-
		BR	P1969	2554	2864	2714	3056	2907	3185	3185	3923	3474	3848	-

Finiture traversa / Crossbar finishes

Alluminio laccato/Lacquered aluminium



GN



BR



TETE



TFTF



TEB1



TEC1



TEC2



TEC3



TER4



TEV2



TEN1



TEM6



TES1



AEAE



AEB1



AEC2



AEC3



AES1



NENE



NEB1



NEC1



NEC2



NEC3



NER4



NEV2



NEN1



NEM6



NES1



LFLF



MESP



MLSP



MES1



MLS1



MBSP



MLM7



CI



CT



CD



CG



CX



CC



CZ



KC



CA



CO



CI



CU



CY



CL



CQ



CF



CH



CV



CW



KV



RN



RG



WG



NC

Finiture gambe / Legs finishes

Legno / Wood



FF



DF



NF

Please refer to page 278 of the current Price List for sale conditions.

Per le condizioni di vendita fare riferimento a pagina 278 del listino attualmente in vigore.

Lewood shaped 01

Design by Gianluigi Landoni

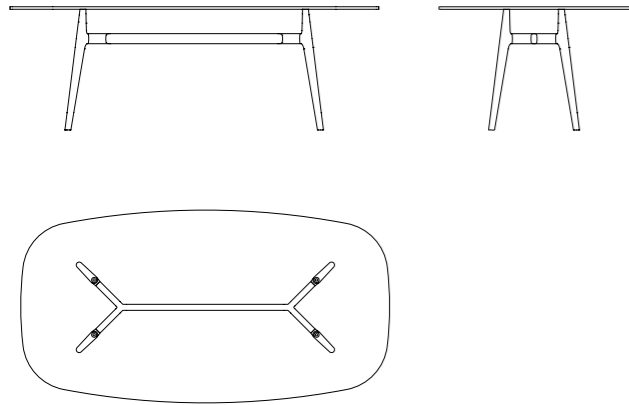


Table with aluminium crossbar and wooden legs, various finishes. Top available in various sizes, materials and finishes.

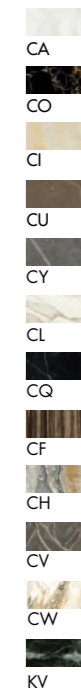
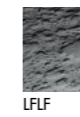
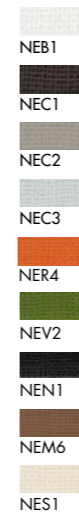
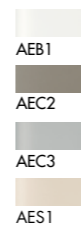
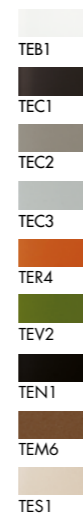
Tavolo con traversa in alluminio e gambe in legno, varie finiture. Top disponibile in varie misure, materiali e finiture.

Finiture top / Top finishes

Dimensions cm (L x P x H)	Base	Cod	VETRO GLASS		ACIDATO FROSTED		NET GLASS		LIQUID GLASS	MATERIA	CERAMICA CERAMICS		LEGNO WOOD
			TETE/TFTF	Cat. B / D	AEAE	Cat. E	Cat. NE	Cat. N	LFLF	Cat. CE1	Cat. CE2		
prezzi in € / price in €													
220x115x74h	4 legs	GN	2752	3160	-	3353	3150	3524	3546	4412	3802	4252	-
		BR	2825	3233	-	3426	3223	3597	3619	4485	3875	4325	-
250x120x74h	4 legs	GN	3043	3502	-	3738	3492	3941	3941	4968	4283	4786	-
		BR	3116	3575	-	3811	3565	4014	4014	5041	4356	4859	-

Finiture traversa / Crossbar finishes

Alluminio laccato/Lacquered aluminium



Finiture gambe / Legs finishes

Legno / Wood



Please refer to page 278 of the current Price List for sale conditions.

Per le condizioni di vendita fare riferimento a pagina 278 del listino attualmente in vigore.

Lewood shaped 02

Design by Gianluigi Landoni

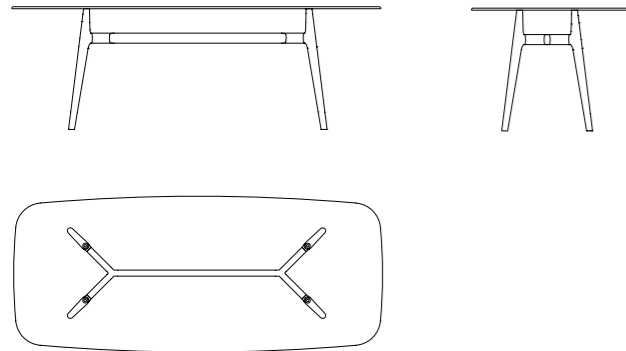


Table with aluminium crossbar and wooden legs, various finishes. Top available in various sizes, materials and finishes.

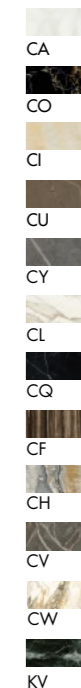
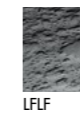
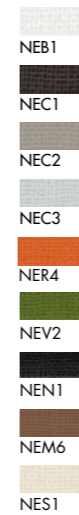
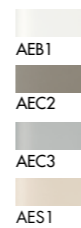
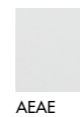
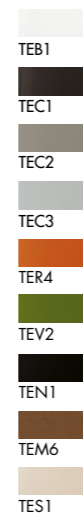
Tavolo con traversa in alluminio e gambe in legno, varie finiture. Top disponibile in varie misure, materiali e finiture.

Finiture top / Top finishes

Dimensions cm (L x P x H)	Base	Cod	VETRO GLASS		ACIDATO FROSTED		NET GLASS		LIQUID GLASS	MATERIA	CERAMICA CERAMICS		LEGNO WOOD	
			TETE/TFTF	Cat. B / D	AEAE	Cat. E	Cat. NE	Cat. N	LF	Cat. CE1	Cat. CE2			
prezzi in € / price in €														
180x93x74h	4 legs	GN	P1972	2262	2423	2412	2551	2465	2658	2658	3214	2818	3086	-
		BR	P1972	2325	2486	2475	2614	2528	2721	2721	3277	2881	3149	-
200x93x74h	4 legs	GN	P1973	2369	2551	2529	2690	2594	2808	2808	3428	2989	3289	-
		BR	P1973	2432	2614	2592	2753	2657	2871	2871	3491	3052	3352	-
220x93x74h	4 legs	GN	P1974	2508	2700	2679	2861	2743	2989	2989	3663	3182	3513	-
		BR	P1974	2571	2763	2742	2924	2806	3052	3052	3726	3245	3576	-
260x100x74h	4 legs	GN	P1975	2781	3191	3021	3431	3191	3601	3601	4501	3871	4331	-
		BR	P1975	2843	3253	3083	3493	3253	3663	3663	4563	3933	4393	-

Finiture traversa / Crossbar finishes

Alluminio laccato/Lacquered aluminium



Finiture gambe / Legs finishes

Legno / Wood



Please refer to page 278 of the current Price List for sale conditions.

Per le condizioni di vendita fare riferimento a pagina 278 del listino attualmente in vigore.

Lewood shaped 03

Design by Gianluigi Landoni

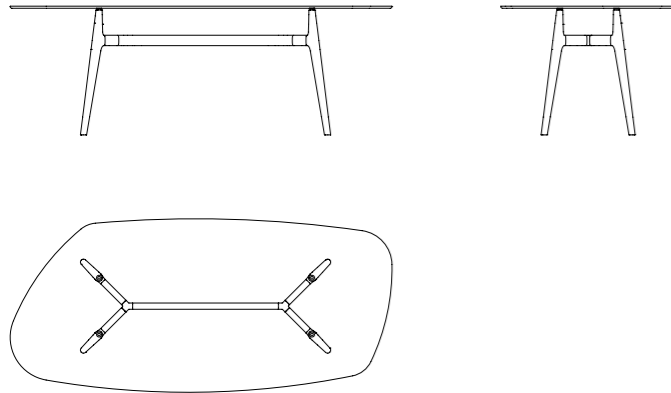


Table with aluminium crossbar and wooden legs, various finishes. Top available in various sizes, materials and finishes.

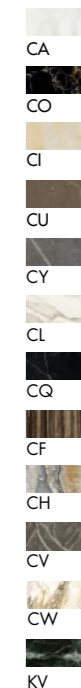
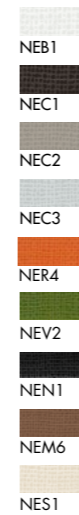
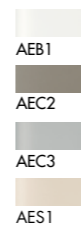
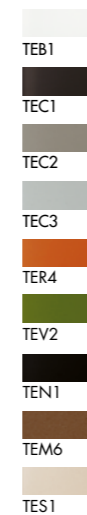
Tavolo con traversa in alluminio e gambe in legno, varie finiture. Top disponibile in varie misure, materiali e finiture.

Finiture top / Top finishes

Dimensions cm (L x P x H)	Base	Cod	VETRO GLASS		ACIDATO FROSTED		NET GLASS		LIQUID GLASS	MATERIA	CERAMICA CERAMICS		LEGNO WOOD
			TETE/TFTF	Cat. B / D	AEAE	Cat. E	Cat. NE	Cat. N	LFLF	Cat. CE1	Cat. CE2		
prezzi in € / price in €													
220x100x74h	4 legs	GN	2939	3349	3179	3589	3349	3759	3759	4659	4029	4489	-
		BR	3002	3412	3242	3652	3412	3822	3822	4722	4092	4552	-
260x100x74h	4 legs	GN	3181	3591	3421	3831	3591	4001	4001	4901	4271	4731	-
		BR	3243	3653	3483	3893	3653	4063	4063	4963	4333	4793	-
260x120x74h	4 legs	GN	3732	4262	4042	4562	4262	4782	4782	5932	5132	5722	-
		BR	3805	4335	4115	4635	4335	4855	4855	6005	5205	5795	-

Finiture traversa / Crossbar finishes

Alluminio laccato/Lacquered aluminium



Finiture gambe / Legs finishes

Legno / Wood



Please refer to page 278 of the current Price List for sale conditions.

Per le condizioni di vendita fare riferimento a pagina 278 del listino attualmente in vigore.

Lewood rectangular

Design by Gianluigi Landoni

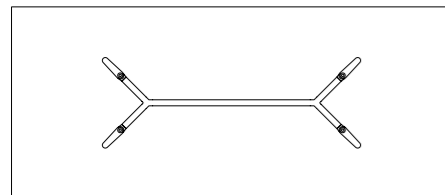
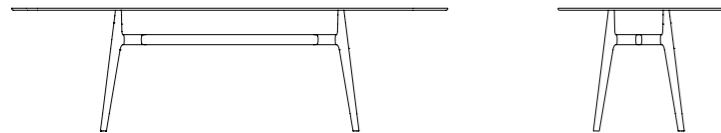


Table with aluminium crossbar and wooden legs, various finishes. Top available in various sizes, materials and finishes.

Tavolo con traversa in alluminio e gambe in legno, varie finiture. Top disponibile in varie misure, materiali e finiture.

Finiture top / Top finishes

Dimensions cm (L x P x H)	Base	Cod	VETRO GLASS		ACIDATO FROSTED		NET GLASS		LIQUID GLASS	MATERIA	CERAMICA CERAMICS		LEGNO WOOD	
			TETE/TFTF	Cat. B / D	AEAE	Cat. E	Cat. NE	Cat. N	LF LF	Cat. CE1	Cat. CE2			
prezzi in € / price in €														
180x90x74h	4 legs	GN	P1980	2230	2391	2369	2509	2423	2616	2616	3151	2776	3033	-
		BR	P1980	2293	2454	2432	2572	2486	2679	2679	3214	2839	3096	-
200x90x74h	4 legs	GN	P1981	2454	2626	2615	2765	2668	2882	2882	3482	3054	3343	-
		BR	P1981	2517	2689	2678	2828	2731	2945	2945	3545	3117	3406	-
240x120x74h	4 legs	GN	P1982	3310	3685	3663	-	-	-	-	-	4038	4509	3503
		BR	P1982	3383	3758	3736	-	-	-	-	-	4111	4582	3576
250x100x74h	4 legs	GN	P1983	2978	3299	3289	-	-	-	-	-	3685	4113	-
		BR	P1983	3040	3361	3351	-	-	-	-	-	3747	4175	-

Finiture traversa / Crossbar finishes

Alluminio laccato/Lacquered aluminium



GN



BR



TETE



TFTF



TEB1



TEC1



TEC2



TEC3



TER4



TEV2



TEN1



TEM6



TES1



AEAE



AEB1



AEC2



AEC3



AES1



NENE



NEB1



NEC1



NEC2



NEC3



NER4



NEV2



NEN1



NEM6



NES1



LFLF



MESP



MLSP



MES1



MLS1



MBSP



MLM7



CI



CT



CD



CG



CX



CC



CZ



KC



CA



CO



CI



CU



CY



CL



CQ



CF



CH



CV



CW



KV



RN



RG



WG



NC

Finiture gambe / Legs finishes

Legno / Wood



FF



DF



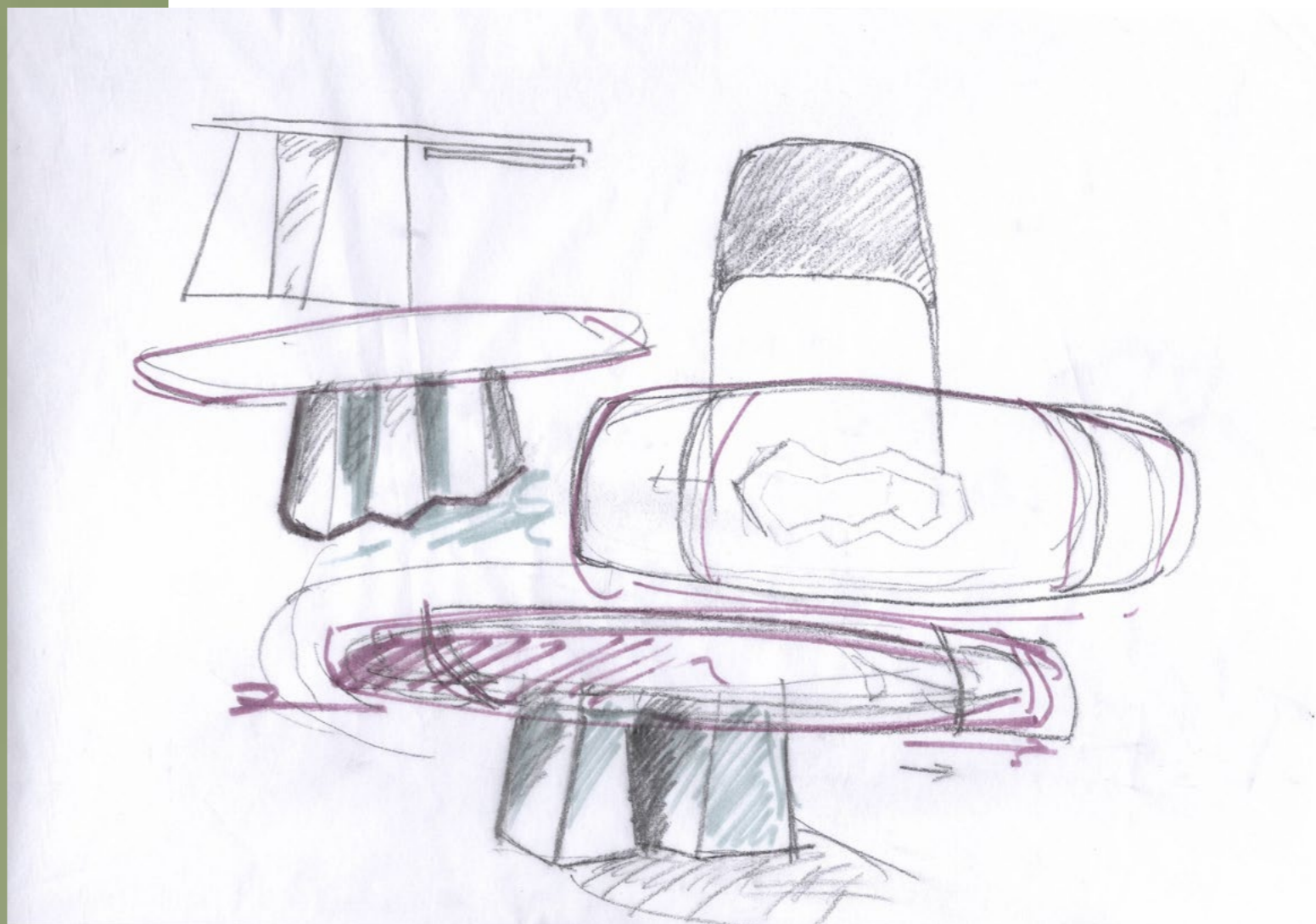
NF

Please refer to page 278 of the current Price List for sale conditions.

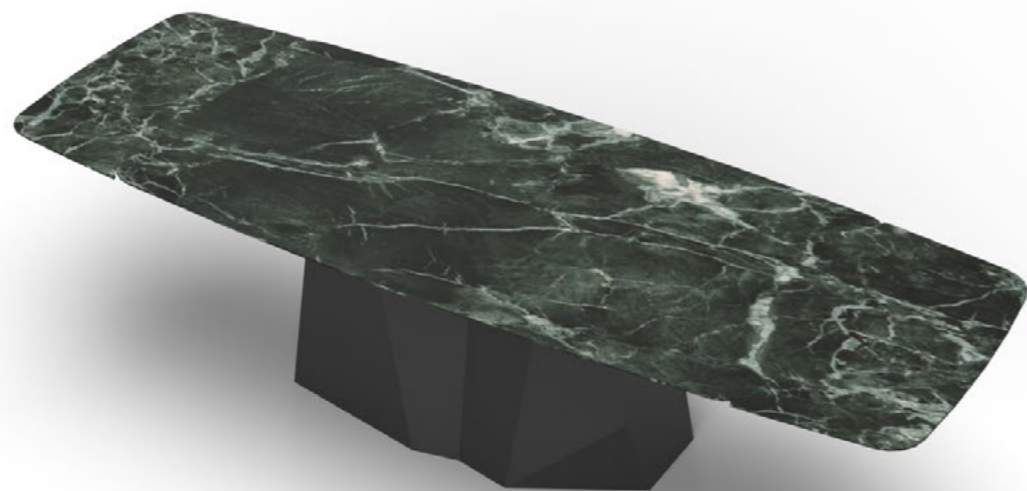
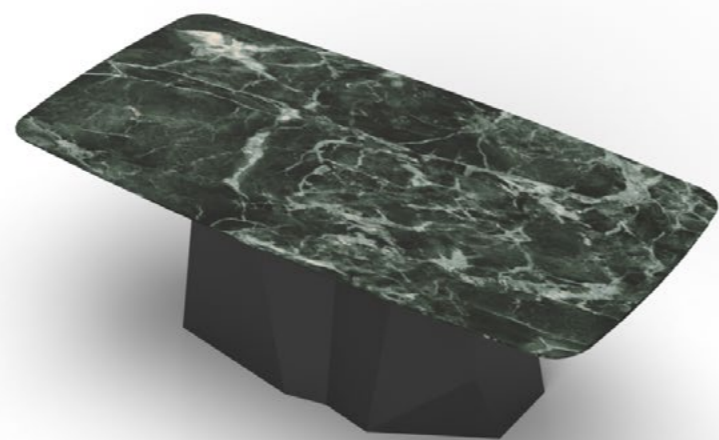
Per le condizioni di vendita fare riferimento a pagina 278 del listino attualmente in vigore.

Grandeod

extensible



Design by Gianluigi Landoni

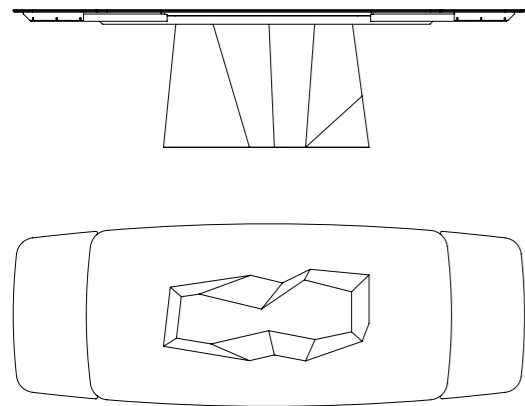


news

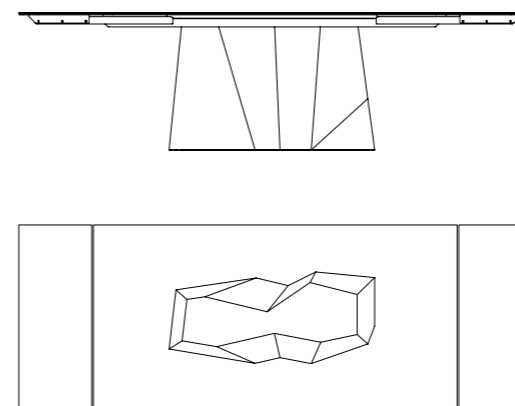
Grandeod extensible

Design by Gianluigi Landoni

shaped



rectangular / rettangolare



Extensible dining table with lacquered metal base, various finishes. Tempered or laminated top in different measures, materials and finishes. Extensible structure with aluminium finish.

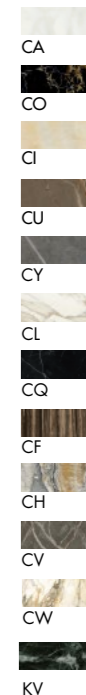
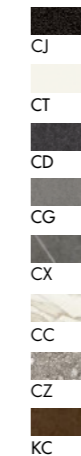
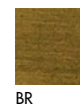
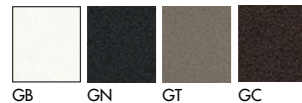
Tavolo allungabile con base in metallo verniciato, disponibile in varie finiture. Top temperato o stratificato in varie misure, materiali e finiture. Struttura allungabile con finitura alluminio.

Finiture top / Top finishes

Dimensions cm (L x P x H)	Base	Cod	VETRO GLASS	ACIDATO FROSTED	NET GLASS	CERAMICA CERAMICS	
			Cat. B / D	Cat. E	Cat. N	Cat. CE1	Cat. CE2
prezzi in € / price in €							
Closed 200x100 Open 280x100	GB/GN/GT/GC	P1440	5210	5435	5680	6066	6569
	BR	P1440	5590	6060	6060	6446	6949
Closed 220x120 Open 300x120	GB/GN/GT/GC	P1444	5130	6030	6350	6670	7420
	BR	P1444	5510	6410	6730	7050	7800
Closed 200x100 Open 280x100	GB/GN/GT/GC	P1442	5070	5264	5510	5895	6355
	BR	P1442	5322	5762	5762	6275	6735

Finiture basi / Bases finishes

Metallo laccato/Lacquered metal



Please refer to page 278 of the current Price List for sale conditions.

Per le condizioni di vendita fare riferimento a pagina 278 del listino attualmente in vigore.

Sovet was born at the end of the '80s to explore the expression possibilities of glass in the contemporary furnishing. Since the beginning of the years 2000 it starts the collaboration with important international designers and introduces other materials alongside glass, widening its perspective under the sign of creativity and continuous evolution. From "New shapes for glass" to "New shapes for design", in the last 30 years the company has undergone a constant growth, transforming itself from a company identified with glass to an internationally successful 360-degree design company, with new solutions both for home and contract environment which combine minimalism and an accurate materials selection.